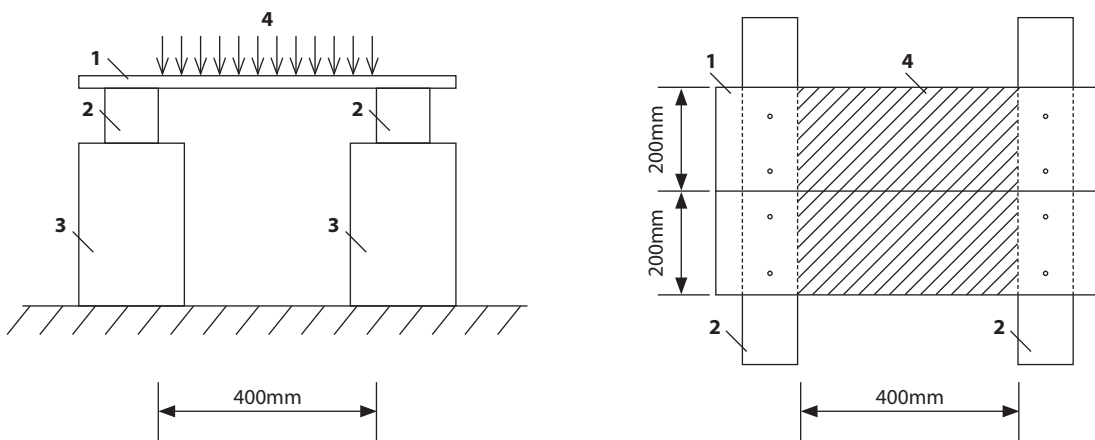


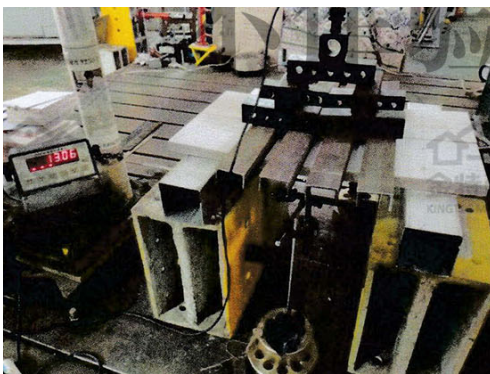

**FIRE PROOF A1 RATED
NON-COMBUSTIBLE
DECKING**

WDa20191225001a4 2440 x 200 x 25mm	TEST RESULTS		
TEST ITEM 5 minutes. Uniform load test: The vertical downward uniform load is applied to two trestle slab specimens, and the load is loaded to failure at different stages for five minutes. The deformation in the middle span position is read and the failure condition of the specimen is recorded.	Applied Load Value (Kilos)	Applied Load Value (kN)	Average Value of Mid-span Deformation (mm)
	0.00	0.00	0.00
	101.97	1.00	0.187
	203.94	2.00	0.355
	305.91	3.00	0.529
	407.89	4.00	0.716
	509.86	5.00	0.912
	611.83	6.00	1.116
	713.80	7.00	1.307
	815.77	8.00	1.498
	866.76	8.50	1.593
	917.74	9.00	1.687
	968.73	9.50	1.825
	1019.72	10.00	1.946
	1070.70	10.50	2.068
	1121.69	11.00	2.199
	1172.67	11.50	2.333
	1223.66	12.00	2.489
	1274.65	12.50	2.625
	1325.63	13.00	2.826
	1331.75	13.06	Termination of Trial
BRIEF DESCRIPTION OF THE DEVICE The two trestle plate specimens are carried together, the trestle plate is fastened and installed on the skeleton with self-tapping screws, the skeleton is fastened to the rigid support, the test net span is 400mm, and the test surface width is 200 x 3 = 600mm. Install the meter at both ends of the middle bottom of the specimen and the data of sinking deformation is read.			

TEST LOADING SCHEMATIC DIAGRAM



1-Trestle Board Specimen. 2-Skeleton. 3-Rigid Support. 4-Uniform Load.



TEST PICTURE
Measured failure load

SPECIMEN LOAD - DEFORMATION CURVE GRAPH

